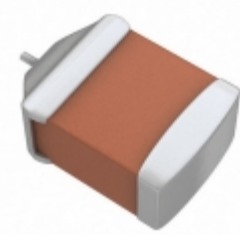


592D337X96R3C2T16H



Part Number: [592D337X96R3C2T16H](#)
Manufacturer: [Electro-Films \(EFI\) / Vishay](#)
Description: CAP TANT 330UF 6.3V 10% 2812
Data sheet: [592D Series](#)

RoHS Status: Lead free / RoHS Compliant
Ship From: Hong Kong
Shipment Way: DHL/Fedex/TNT/UPS/EMS

Images are for reference only.
 See Product Specifications for product details.
 Buy 592D337X96R3C2T16H with confidence from
 Component-World.HK, 1 Year Warranty

[Request For Quotation](#)

PRODUCT PARAMETER

Part Number	592D337X96R3C2T16H	Manufacturer	Electro-Films (EFI) / Vishay
Description	CAP TANT 330UF 6.3V 10% 2812	Lead Free Status / RoHS Status	Lead free / RoHS Compliant
Quantity Available	69866 pcs	Data sheet	592D Series
Category	Capacitors	Voltage - Rated	6.3V
Type	Conformal Coated	Tolerance	±10%
Size / Dimension	0.280" L x 0.126" W (7.10mm x 3.20mm)	Series	TANTAMOUNT®, 592D
Packaging	Tape & Reel (TR)	Package / Case	2812 (7132 Metric)
Operating Temperature	-55°C ~ 125°C	Mounting Type	Surface Mount
Moisture Sensitivity Level (MSL)	2A (4 Weeks)	Manufacturer Standard Lead Time	15 Weeks
Manufacturer Size Code	C	Lifetime @ Temp.	-
Lead Spacing	-	Lead Free Status / RoHS Status	Lead free / RoHS Compliant
Height - Seated (Max)	0.063" (1.60mm)	Features	General Purpose
Failure Rate	-	ESR (Equivalent Series Resistance)	150 mOhm
Detailed Description	330µF Conformal Coated Tantalum Capacitors 6.3V 2812 (7132 Metric) 150 mOhm	Capacitance	330µF

Component-World.com is a Reliable Stocking Distributor of Electronic Components. We specialize in all Electro-Films (EFI) / Vishay series electronic components. We have 69866 pieces of Electro-Films (EFI) / Vishay 592D337X96R3C2T16H in stock available now. Request a quote from electronics components distributor at Component-World.com, our sales team will contact you within 24 hours.
 RFQ Email: info@Components-World.com

RELATED PRODUCTS

	Part#: 592D337X06R3R2T15H Description: CAP TANT 330UF 6.3V 20% 2824	Manufacturers: Electro-Films (EFI) / Vishay	RFQ
	Part#: 592D337X9004C2T20H Description: CAP TANT 330UF 4V 10% 2812	Manufacturers: Electro-Films (EFI) / Vishay	RFQ
	Part#: 592D337X06R3R2T20H Description: CAP TANT 330UF 6.3V 20% 2824	Manufacturers: Electro-Films (EFI) / Vishay	RFQ
	Part#: 592D337X96W3D2T20H Description: CAP TANT 330UF 6.3V 10% 2917	Manufacturers: Electro-Films (EFI) / Vishay	RFQ
	Part#: 592D337X06W3D2T20H Description: CAP TANT 330UF 6.3V 20% 2917	Manufacturers: Electro-Films (EFI) / Vishay	RFQ
	Part#: 592D337X96R3D2T15H Description: CAP TANT 330UF 6.3V 10% 2917	Manufacturers: Electro-Films (EFI) / Vishay	RFQ
	Part#: 592D337X96R3D2T19H Description: CAP TANT 330UF 6.3V 10% 2917	Manufacturers: Electro-Films (EFI) / Vishay	RFQ
	Part#: 592D337X96R3R2T15H Description: CAP TANT 330UF 6.3V 10% 2824	Manufacturers: Electro-Films (EFI) / Vishay	RFQ
	Part#: 592D337X9010R2T20H Description: CAP TANT 330UF 10V 10% 2824	Manufacturers: Electro-Films (EFI) / Vishay	RFQ
	Part#: 592D337X96R3D2T20H Description: CAP TANT 330UF 6.3V 10% 2917	Manufacturers: Electro-Films (EFI) / Vishay	RFQ
	Part#: 592D475X0016A2T15H Description: CAP TANT 4.7UF 16V 20% 1507	Manufacturers: Electro-Films (EFI) / Vishay	RFQ
	Part#: 592D337X06R3R2T12H Description: CAP TANT 330UF 6.3V 20% 2824	Manufacturers: Electro-Films (EFI) / Vishay	RFQ
	Part#: 592D337X06R3V2T035 Description: CAP TANT 330UF 6.3V 20% 3017	Manufacturers: Electro-Films (EFI) / Vishay	RFQ
	Part#: 592D337X96R3C2T20H Description: CAP TANT 330UF 6.3V 10% 2812	Manufacturers: Electro-Films (EFI) / Vishay	RFQ
	Part#: 592D337X9010D2T20H Description: CAP TANT 330UF 10V 10% 2917	Manufacturers: Electro-Films (EFI) / Vishay	RFQ
	Part#: 592D337X96R3D2T16H Description: CAP TANT 330UF 6.3V 10% 2917	Manufacturers: Electro-Films (EFI) / Vishay	RFQ
	Part#: 592D337X9004D2T20H Description: CAP TANT 330UF 4V 10% 2917	Manufacturers: Electro-Films (EFI) / Vishay	RFQ
	Part#: 592D337X96R3V2T035 Description: CAP TANT 330UF 6.3V 10% 3017	Manufacturers: Electro-Films (EFI) / Vishay	RFQ
	Part#: 592D337X9010R8T20H Description: CAP TANT 330UF 10V 10% 2824	Manufacturers: Electro-Films (EFI) / Vishay	RFQ
	Part#: 592D337X96R3R2T12H Description: CAP TANT 330UF 6.3V 10% 2824	Manufacturers: Electro-Films (EFI) / Vishay	RFQ

Related keywords for 592D337X96R3C2T16H

Electro-Films (EFI) / Vishay 592D337X96R3C2T16H	592D337X96R3C2T16H distributor	592D337X96R3C2T16H supplier	592D337X96R3C2T16H price
592D337X96R3C2T16H download datasheet	592D337X96R3C2T16H datasheet	592D337X96R3C2T16H stock	buy 592D337X96R3C2T16H
Electro-Films (EFI) / Vishay 592D337X96R3C2T16H	Electro-Films (EFI) / Vishay 592D337X96R3C2T16H	Vishay Electro-Films 592D337X96R3C2T16H	Phoenix Passive Components / Vishay 592D337X96R3C2T16H